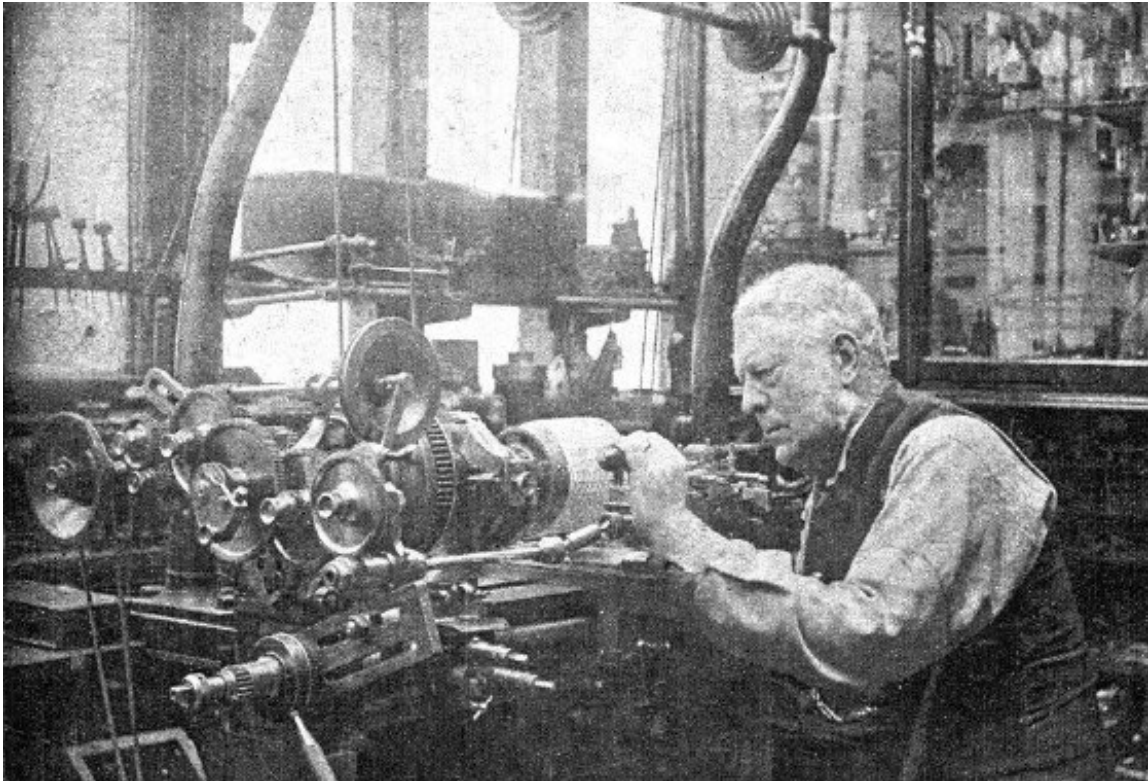


# Boultham Hall and the Ellison Orange apple



Charles Christopher Ellison was born on 26 November, 1834, and was educated at Rugby and Trinity College, Cambridge. He was ordained in 1858, and was curate of Newark until 1868, then for a time Curate in charge of Wrawby near Brigg, until he became Curate of Boultham in 1863. In 1862 he married Elizabeth Beevor daughter of Henry Beevor Esq of Blyth.

In 1874 Charles became Vicar of Bracebridge and Rector of Boultham. In a book published in 1900 it said of C.C. Ellison that in 1897 he "*retired into private life, or practically so, for he still officiated as Rector of Boultham*" which is acknowledged on his memorial plaque in St Helens Church. The population of the parish in 1897 was around 600.

As his brother and their antecedents had, Charles too took a leading part in local affairs. He was chairman of the Lincoln Board of Guardians for nearly 30 years, and Chaplain of Bracebridge Asylum for 43 years. Expert in ivory and metal turning for which he won many medals, he had a Lathe Room at Boultham Park which is mentioned in the sale of the contents 1917.

He was however, most famous as a rose grower. He laid out 4 acres of garden at Bracebridge with thousands of roses, and when he opened the garden to the public it was one of the outstanding events of the Lincoln year as thousands of people visited it. He was a great cultivar of different plants and he with the support of others developed the Ellison's' Orange variety of apple. His friendship with the Pennell family had spanned the years and they had sold his rose varieties and his apple variety through their catalogues in 1907. The picture above is loaned from the Pennell archive and was sent to Charles Pennell from Charles Ellison. It shows Charles Ellison at his lathe.

Charles died in Bracebridge in 1910 and local papers showed that hundreds mourned his passing.